



Queensland Centre for
Domestic and Family
Violence Research



2024 AT A GLANCE

WWW.NOVIOLENCE.ORG.AU

ACKNOWLEDGEMENTS

ACKNOWLEDGEMENT OF COUNTRY

We proudly acknowledge the Traditional Owners of the lands across Queensland and Australia's other states and territories and pay our respects to All First Nations Peoples. We acknowledge that sovereignty over this land was never ceded. We value the ongoing contribution of our many First Nations partners in advising, supporting and contributing to our work and projects, so that your voices and those of your communities are reflected in our work. We thank you with humility.

ACKNOWLEDGEMENT OF VICTIM SURVIVORS

We acknowledge the adults, adolescents and children who have been impacted by domestic, family and sexual violence, many of whom remain invisible and unheard. We recognise the importance of an integrated systems' response when victim survivors speak. You are the reason behind, and at the forefront of, our work. We thank you for sharing your stories with us and keeping us grounded in our efforts.

ACKNOWLEDGEMENT OF SPECIALIST & FRONTLINE SERVICES

We acknowledge the life-changing and life-saving work of all on the frontline in gendered violence response specialist services: the value and complexity of your work cannot be overestimated. We appreciate that this cannot be done in isolation and we highlight the worth of working together across sectors to create safer lives for victim survivors. We thank those specialists, and all who work with you, for the many ways in which you support and enrich our endeavours.

ACKNOWLEDGEMENT OF OUR PARTNERS

We acknowledge the funding received from the Queensland Government, the investment and support of CQUniversity, the invaluable advice from our First Nations Advisory Group and our valued Adjuncts and Centre Members – without you we couldn't achieve our mission of changing and ending the tragic story of domestic, family and sexual violence.

OUR PARTNERS

SUPPORTING OUR WORK **SUPPORTING THE WORK OF OTHERS.**

As well as our colleagues within the School of Nursing, Midwifery and Social Sciences, QCDFVR engaged with a large number of partners to support projects, provide advice, and share knowledge.

- 
- 
- Office of the Independent Implementation Supervisor
 - CQUniversity School of Business and Law
 - Red Rose Foundation**
 - SENTENCING COUNCIL
 - Griffith University**
 - CHALLENGE DV**
 - PCYC
 - QDVSN** Mackay Mayor's Domestic Violence Taskforce
 - FAMILY EMERGENCY ACCOMMODATION TOWNSVILLE
 - Queer and Trans Workers Against Violence Network**
 - Queensland Technical Working Group
 - QSAN**
 - Queensland SPEAQ**
 - Qd Integrated Services Team**
 - Queensland Workup**
 - Queensland TAFE Applied Sciences**
 - Queensland SPEAQ**
 - Central Queensland Indigenous Development
 - Uniting Care
 - Commission**
 - CATHOLIC CARE**
 - MARABISDA**
 - Carers Queensland**
 - FAR NORTH SHELTER NETWORK**
 - Georgiou/BMD Group**
 - Mackay Integrated Services**

CONTENTS

	RESEARCH & EVALUATION	01
	SECTOR SUPPORT	07
	EDUCATION & TRAINING	14

ASSOCIATE PROFESSOR

HEATHER LOVATT

Director, Queensland Centre for Domestic and Family Violence Research.



Welcome to *2024 At a Glance* – a snapshot of our year in review. This review is arranged around our work across three integrated pillars.

If you are interested in knowing more, our website (www.noviolence.org.au) provides additional information but feel free to reach out to us if you would like to find out more about any specific area by emailing us (gcdfvronline@cqu.edu.au) or phoning (07 49403320).



On pages 1 to 6 you'll find a synopsis of the research undertaken over the year. On pages 7 to 13 a glimpse into our sector development work is presented, including our engagement with First Nations stakeholders. Lastly, an update on 2024's education, inclusive of formal, postgraduate courses and non-accredited training options, is provided on pages 14 to 19.

We trust that you will enjoy this little sojourn back through our 2024 and look forward to 2025. We maintain our commitment to contribute to a safer world for women and their children. As always our thanks to the Queensland Government and CQUniversity for investing in us, and our many partners who make our work possible – we couldn't do it without you.

Associate Professor Heather Lovatt
Director, Queensland Centre for Domestic and Family Violence Research



RESEARCH + EVALUATION

RESEARCH

Our research and evaluation projects aspire to make a social impact. Our work is supported by practice and cultural wisdom from our frontline partners and shaped by the voices of those with lived experience.

Key projects

QCDFVR has continued to work with the community to undertake innovative and impactful research that improves the safety of women and their children. Our work has involved regional, state, national and international collaborations. Projects continued, initiated or completed over 2024 included:



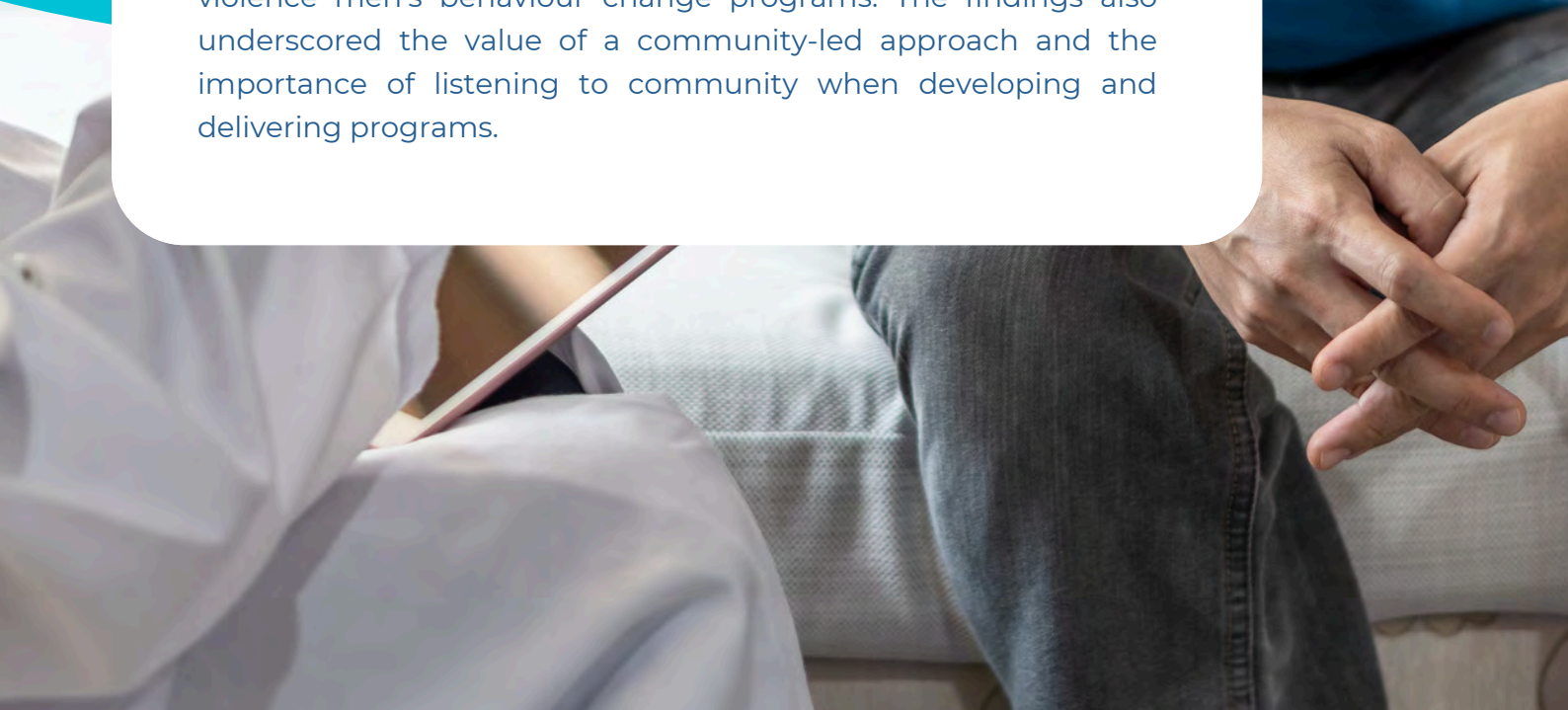
CASE STUDY

Evaluation of the Good Way Change Men's Behaviour Program.

In 2023 Central Queensland Indigenous Development (CQID) was successful in sourcing a Keeping Women Safe from Violence grant to enable this evaluation. Good Way Change (GWC) is the Hervey Bay region's first Indigenous-led, designed and delivered male behaviour change program. QCDFVR was approached to conduct this project, the objectives of which were to:

- Investigate how the GWC Program was established, the progress and evolution of the model, and how Program outcomes and impacts are being achieved.
- Capture the benefits of incorporating an Indigenous-led approach to Program design and delivery.

Through a comprehensive review of relevant program and policy documentation, individual interviews with key stakeholders and analysis of available performance data, Assoc Prof Heather Lovatt and Colleen Gunning found that GWC was integrated with evidence-based standards relating to domestic and family violence men's behaviour change programs. The findings also underscored the value of a community-led approach and the importance of listening to community when developing and delivering programs.



RESEARCH HIGHER DEGREES

The interest in undertaking research higher degrees on domestic, family and sexual violence continued to grow.

Topics being explored include:



- The lived experience of the partners/caregivers of ex-Australian Defence Force veterans diagnosed with post- traumatic stress disorder with a focus on domestic and family violence and suicidality.
- What might explain why some men use strangulation in their abusive intimate partner relationships?
- Reproductive health and violence against women: the experience of Afghan migrant women in South-East Melbourne.
- Communities of practice as a protective factor against the impact of vicarious trauma (on specialist domestic and family violence practitioners).
- Online dating sexual violence.
- Coercive control.
- Breaching of domestic and family violence protective orders.

KNOWLEDGE TRANSLATION

Research was shared through a variety of mechanisms including a range of publications and presentations. This snapshot provides an overview of knowledge translation by key QCDFVR staff. We also acknowledge the contribution made by the Centre's Adjuncts and Members.

Journal articles

Lowik, V., Cheyne, N., & Lovatt, H. (2024). 'I'm going to take my power back and do whatever I can': The self-efficacy of survivors of intimate partner strangulation and their engagement in research interviews. *Qualitative Social Work*, 23(4), 650-666. <https://doi.org/10.1177/14733250231225156>

Sleep, L. (2024). 'This is NOT human services': Counter-mapping automated decision-making in social services in Australia. *Journal of Sociology*, 0(0). <https://doi.org/10.1177/14407833241266022>

Reports

Carswell, S., (2024). *Evaluation of Men Sustaining Change Pilot 2021-2023*, UnitingCare.

Lovatt, H. & Gunning, C., (2024). Final Report of the Evaluation of the Good Way Change Program, Central Queensland Indigenous Development.

Maitra, S., Sleep, L., Fay, S., Henman, P. (2024). *Building a Trauma-Informed Algorithmic Assessment Toolkit, Project Report*. Brisbane: ARC Centre of Excellence for Automated Decision-Making and Society, University of Queensland, DOI: 10.60836/f01c-4a18.

McDermott, L. & Lovatt, H., (2024). *Final Report of the Evaluation of the Strangulation Trauma Centre*, Department of Justice and Attorney-General.

Weatherall, K., Henman, P., Bello y Villarino, J.-M., Matulionyte, R., Sleep, L., Trezise, M., Van Der Arend, J., & Wilcock, S., (2024). *Executive Report - Automated decision-making in NSW: Mapping and analysis of the use of ADM systems by state and local governments* (Research Report) (ADM+S, 2024).

Book Chapters

Redden J. & Sleep L., (2024) "Welfare/ Social Policy and AI". In R. Paul and E. Carmel (Eds), *Handbook on Public Policy and Artificial Intelligence*. Edward Elgar Publishing Ltd.

CONFERENCE PRESENTATIONS

Dr Nicola Cheyne and Assoc Prof Heather Lovatt presented at the Red Rose Foundation Non-lethal Strangulation Symposium. Their paper was titled *Non-lethal strangulation: a life sentence?*.

Three QCDFVR researchers, Dr Liane McDermott, Dr Justine Hotten and Dr Lyndal Sleep attended the “Wayfinding” Melbourne AES Conference. Lyndal presented *Introducing a trauma informed AI assessment tool for evaluators of AI (artificial intelligence) assisted programs and services*.

Dr Lyndal Sleep presented at the “Social Policy Futures Conference” in Glasgow, Scotland. Lyndal’s paper was titled *Building a trauma-informed assessment for digital social services delivery futures*.

Assoc Prof Jennifer Smith presented at the 17th National Rural Health Conference in Perth. Her topic was *Intimate partner homicide: Improving risk assessment by rural health practitioners*.

Associate Professor Heather Lovatt presented at the 5th National Human Research Ethics Committees (HREC) Conference. Her topic was *Ethical diligence or gatekeeping – the quandary when vulnerable populations are involved*.

Dr Sue Carswell, presented at the Family and Relationship Services (FRSA) National Conference with Dr Chez Leggatt-Cook and Joanne Smith from Uniting Care. Their presentation was titled *How the Men Sustaining Change program is supporting long-term desistance from domestic and family violence*.





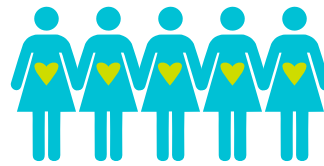
SECTOR SUPPORT

COMMUNITIES OF PRACTICE

Communities of Practice serve a valuable role for front line practitioners. In 2024 Elizabeth Boardman facilitated two Communities of Practice along with Peer Support sessions for the Queensland.



**FAMILY AND CHILD
CONNECT AND
INTENSIVE FAMILY
SUPPORT SERVICES**



**WOMEN'S
HEALTH AND
WELLBEING
SERVICES**

Presentations:

- Introductions to the new Common Risk and Safety Framework (CRASF) and revised Information Sharing Guidelines
- Research exploring transgender Australians' experience of domestic, family and sexual violence
- Historical and ongoing research into the effects of domestic and family violence on children.
- Child Support Parental testing with Legal Aid
- Introduction to Somatics

“

Fantastic community of people - love the topics and the chance to discuss practice issues. Very well-organised and relevant.

”

“

Thank you so much. It was a great discussion.

”

Peer support topics

- Adolescent to Parent Violence
- Managing and engaging with stakeholders
- Safety Planning revisited
- Supporting clients experiencing systems abuse
- Case study: adolescent experiences of family violence

“

As a new member I liked the opportunity to connect and increase my support network. I also liked to be able to discuss de-identified issues and ask for advice from members.

”

“

I enjoy the continued learning opportunities.

”





QUEENSLAND INDIGENOUS FAMILY VIOLENCE PREVENTION FORUM





QUEENSLAND INDIGENOUS FAMILY VIOLENCE PREVENTION FORUM

The 2024 Queensland Indigenous Family Violence Prevention Forum was held on the 14th and 15th May 2024 attracting delegates from more than 50 different organisations.



I loved the insight of the presenters and great yarning.



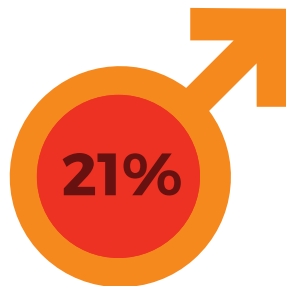
114 PARTICIPANTS FROM AROUND QUEENSLAND GATHERED IN MACKAY



31 DELEGATES JOINED THE FORUM VIRTUALLY



THE MAJORITY (72%) OF ATTENDEES IDENTIFIED AS INDIGENOUS



THE EVENT AGAIN SAW A HEALTHY PROPORTION OF MALE DELEGATES (21%) IN ATTENDANCE.



“Collaboration; connections; conversations in a safe environment.”

“

*So relevant.
Really enjoyed and
benefitted from the
layered program -
national/state/regional*

”

“

*The community
presentations were
very informative
and beneficial*

”



“

*Very
educational,
insightful and
reflective.*

”



“

*Loved Jeremy's
story and
journey such an
inspiration.*

”

**“Connecting with mob. Networking,
listening and yarning. Talking
about culture.”**

OUR VALUED DELEGATES

Maramu Jungu "Healing Together" Logan Community Justice Group
Five Bridges and Murri Sisters
FWIFVS Helen Yumba
First Nations National Plan Steering Committee
 MACKAY CHILDREN & FAMILY CENTRE
RAATSICC Reconcile Life
 UNITING CARE QUEENSLAND
ACT FOR KIDS Warringu Aboriginal & Torres Strait Islander Corporation
 Wuchopperen Health Service
Department of Youth Justice
SNAICC Office of the Interim Victims' Commissioner
 DEPARTMENT OF SOCIAL SERVICES
 QIFVLS
Lena Passi eSAFETY Women's Shelter Inc.
 MARABISDA INC.
Mura Kosker Sorority Inc.
 Sera's Women's Shelter Inc.
 Victims Assist Queensland
 YILYAPINYA INDIGENOUS CORPORATION
 First Nations Justice Corporation
 Office of Justice & Attorney General
 PALM ISLAND COMMUNITY COMPANY
Women's Commissioner
 SOUTH BURNETT CTC INC.
Workup QLD
 SISTERS INSIDE INC.
 CORONER'S COURT OF QLD
AFLSQ
DCSSDS





EDUCATION + TRAINING

HIGHER EDUCATION

The Postgraduate learning options available at CQUniversity continued to be valued by learners:



CV74

GRADUATE CERTIFICATE IN DOMESTIC AND FAMILY VIOLENCE PRACTICE



CV79

GRADUATE DIPLOMA OF DOMESTIC AND FAMILY VIOLENCE PRACTICE



CH81

GRADUATE CERTIFICATE IN FACILITATING MEN'S BEHAVIOUR CHANGE



CL23

MASTER OF DOMESTIC AND FAMILY VIOLENCE PRACTICE



“

The content is exceptionally well-curated, and the materials are structured in a way that makes independent study both engaging and manageable. I truly appreciate the thoughtful critiques and support provided throughout the course.

- JODIE KELLY

(Master of Domestic and Family Violence Practice student)

”

ONLINE TRAINING

Micro-credentials:



PDC73556

ADOLESCENT-TO-PARENT VIOLENCE



PDC87397

UNDERSTANDING THE DYNAMICS OF COERCIVE CONTROL



PDC88568

UNDERSTANDING DOMESTIC AND FAMILY VIOLENCE*



PDC88569

DOMESTIC AND FAMILY VIOLENCE WORK PRACTICES*



PDC88570

LEGAL AND ETHICAL CONSIDERATIONS IN DOMESTIC AND FAMILY VIOLENCE PRACTICE*



PDC88582

WORK HEALTH AND SAFETY CONSIDERATIONS IN DOMESTIC AND FAMILY VIOLENCE PRACTICE*



PDC99012

WORKING WITH PERPETRATORS: BEHAVIOUR CHANGE PROCESSES**



PDC99013

WORKING WITH PERPETRATORS: DYNAMICS, DRIVERS AND TACTICS OF CONTROL**



PDC99015

WORKING WITH PERPETRATORS: GUIDES AND LEGISLATION**



PDC99014

WORKING WITH PERPETRATORS: THE IMPACT OF VIOLENCE ON CHILD DEVELOPMENT**



**Each of these is a component of (VET) unit of competency CHCDFV001 Recognise and respond appropriately to domestic and family violence.*

***These support Queensland's Perpetrator Intervention Services Requirements (PISR).*

ONLINE MODULES

Queensland Domestic and Family Violence Common Risk and Safety Framework:

Written by Suewellyn Kelly & Elizabeth Boardman



LEVEL 1

SCREENING TOOLS
QUEENSLAND



LEVEL 3

MULTI-AGENCY DYNAMIC RISK
ASSESSMENT AND SAFETY
MANAGEMENT TOOLS



LEVEL 2

RISK ASSESSMENT
TOOL



WORKER SAFETY AND
WELLBEING



LEVEL 2

SAFETY PLANNING TOOL



INFORMATION SHARING
GUIDELINES



DELIVERING INTEGRATED
SERVICE RESPONSES



WORKING WITH CULTURALLY
AND LINGUISTICALLY
DIVERSE PEOPLE

Coercive Control:



NEED TO KNOW

COERCIVE CONTROL AND
DOMESTIC AND FAMILY
VIOLENCE



NEED TO KNOW

COERCIVE CONTROL
AND THE LAW



CUSTOMISED TRAINING

Different audiences sometimes need a customised approach and QCDFVR undertook a wide range of training in multiple modes reaching a wide range of stakeholders across Queensland.



Working with Fathers who use Violence

Catholic Care
Toowoomba

Foundations of DFV for the Construction Industry

Georgiou/BMD Group
Brisbane

Coercive Control

Family Law Pathways Network
Mackay

Foundations of DFV

Catholic Care
Rockhampton



Coercive Control

Family Law Pathways Network
Rockhampton

Foundations of DFV for the Construction Industry

Georgiou/BMD Group
Brisbane

DV Foundations

WorkUp Queensland
Virtual delivery



Coercive Control

Family Law Pathways Network
Bundaberg

Foundations of DFV for the Construction Industry

Georgiou/BMD Group
Brisbane

Foundations of DFV for the Construction Industry

Georgiou/BMD Group
Brisbane

CUSTOMISED TRAINING



MAY

DFV and young people in Out of School Hours Care

PCYC
Mackay & Townsville

DFV and people with disability

Carers Queensland
Lutwyche



JUN

DFV and young people in Out of School Hours Care

PCYC - Cairns

DV Foundations

WorkUp Queensland
Virtual delivery

DFV & people with disability

Carers Queensland
Toowoomba, Ipswich, North Lakes & Maroochydore

Foundations of DFV for the Construction Industry

Georgiou/BMD Group
Brisbane



JUL

DFV & people with disability

Carers Queensland
Eight Mile Plains & Logan

DFV & people with disability

Carers Queensland
Lutwyche, Eight Mile Plains & Ashmore



AUG

DV Foundations

WorkUp Queensland
Virtual delivery



SEPT

Foundations of DFV

Catholic Care
Rockhampton



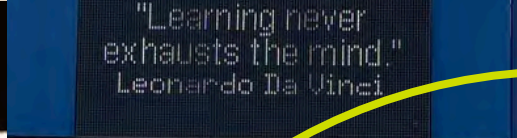
NOV

DV Foundations

WorkUp Queensland
Virtual delivery

Coercive Control

Family Law Pathways Network
Gladstone



We look forward to continuing to be at the **forefront of research, education and sector development** to contribute to the **prevention of and response to violence against women and children.**





 **QCDFVR**
Queensland Centre for Domestic
and Family Violence Research

www.noviolence.org.au



qcdfvonline@cqu.edu.au



07 4940 3320


CQUniversity
AUSTRALIA

Funded by

Queensland
Government