

design Indigenous Men
Women Capacity building
Feminist Participatory Action Research
Children and Families Consultation
Program design
Pragmatic evaluation
Community engagement Education
Social innovation
Consultation Pragmatic evaluation
Capacity
Talking Men Co-design
Participatory Action Research
Families Community
Engagement Social innovation
Program
Indigenous
Advice Co-design
Women Qualitative
Participatory Action Research



2018 Year in Review

 Queensland Centre for
Domestic and Family
Violence Research

Our focus



Research /
knowledge
creation

Sector
support

Education
and training

Our mission is to contribute to the prevention of and response to violence against women (and their children) through research, education and sector support.



Creating and sharing
knowledge since 2002

Welcome

 **Research** pg 01

 **Sector Support** pg 07

 **Education** pg 13

In summary



2018 was an enormous year here at the Centre. We achieved major milestones thanks to the sustained funding from the Queensland Government and enhanced investment by CQUniversity Australia.

We also could not have achieved these milestones without our many and valued partners in the field who shared their experience, expertise and advice with us.

Last year saw our three areas of work, which traditionally have had an emphasis on domestic and family violence, extended to include a focus on sexual assault services, and growing partnerships with health, education and mainstream services.

Conducting research and evaluation is our pivotal platform and last year was busier than ever with local, state and national projects being undertaken over the year. Page 4 gives an overview of these projects, along with some key examples.

At the heart of the Centre's work is a commitment to strengthening practice and capacity building. This is multi-faceted and includes a range of mechanisms such as our website presence and an e-newsletter along with social media allowing 24/7 accessibility. On pages 7-8 you will read more about our achievements, including the local, national and international experts who joined us in live and digital presentations and workshops.

Finally, on pages 13-16 you will read about our education and training offerings. We lead the way in Australia with our Postgraduate units and will be adding to our suite at both Postgraduate and Undergraduate levels in 2019. Unique features of our education and training are the multiple entry points across the spectrum of bespoke, vocational education and post graduate tertiary studies, provided to a diverse range of stakeholders.

We have now embarked on an even fuller program in 2019 and look forward to working with you all this year to make a difference in women's and children's lives.



Dr Heather Lovatt
Director
Queensland Centre for Domestic and Family Violence Research

Our key researchers



Dr Heather Lovatt
Director



Dr Annabel Taylor
Professor of Gendered Research



Dr Silke Meyer
Senior Researcher



Dr Liane McDermott
Senior Researcher



Dr Nicola Cheyne
Senior Researcher



Dr Andrew Frost
Senior Researcher



Dr Marika Guggisberg
Senior Researcher



Dr Sue Carswell
Senior Researcher

Plus a wonderful team of support staff

Judy Pidcock
Rhiannon Dooley
Colleen Gunning
Margaret Roche
Jamie Anderson
Maree Gibbs
Lauren Pattie
Monique Blundell
Terese Kingston
Patrice Zarzecki
Mark Walters
Bronwyn Honorato
Janine Hicks

Plus additional casual trainers, tutors, researchers and administrators



Our Expertise





Research / evaluation

Our research and evaluation projects are supported by practice and cultural wisdom from our valued sector partners, and shaped by the voices of those with the lived experience.

As well, our resource development, and education offerings across the spectrum, are informed by these sources, complemented by the range of contemporary literature available through our positioning within CQUniversity. It is a privilege to be immersed in action research which contributes in a very tangible way to sector development and education, in other words, to research with impact, and education with a focus on practice!

QCDFVR's growing research reputation in the engagement and social impact space is evidenced in its selection as a

CQUniversity 2018 case study as part of the Australian Research Council's Engagement and Impact Assessment; a new reporting requirement for all universities in Australia.

The Centre has the benefit of not only having research-dedicated staff, but our expert lecturers who deliver the Postgraduate Domestic and Family Violence Practice Courses were also research active. With research-dedicated and teaching staff this extended our capacity for the 12 research and evaluation projects on which we embarked (see diagram on p4).

In addition to these projects, a range of literature reviews were completed as part of other initiatives. Examples include the development of a practice paper on domestic violence and child protection for practitioners within the Department of Child Safety, Youth and Women, and a literature review for a practice paper on the prevention of and responses to Aboriginal and Torres Strait Islander sexual assault.

Meanwhile, Centre staff developed their mentorship of future researchers through supervision of Research Higher Degree students.

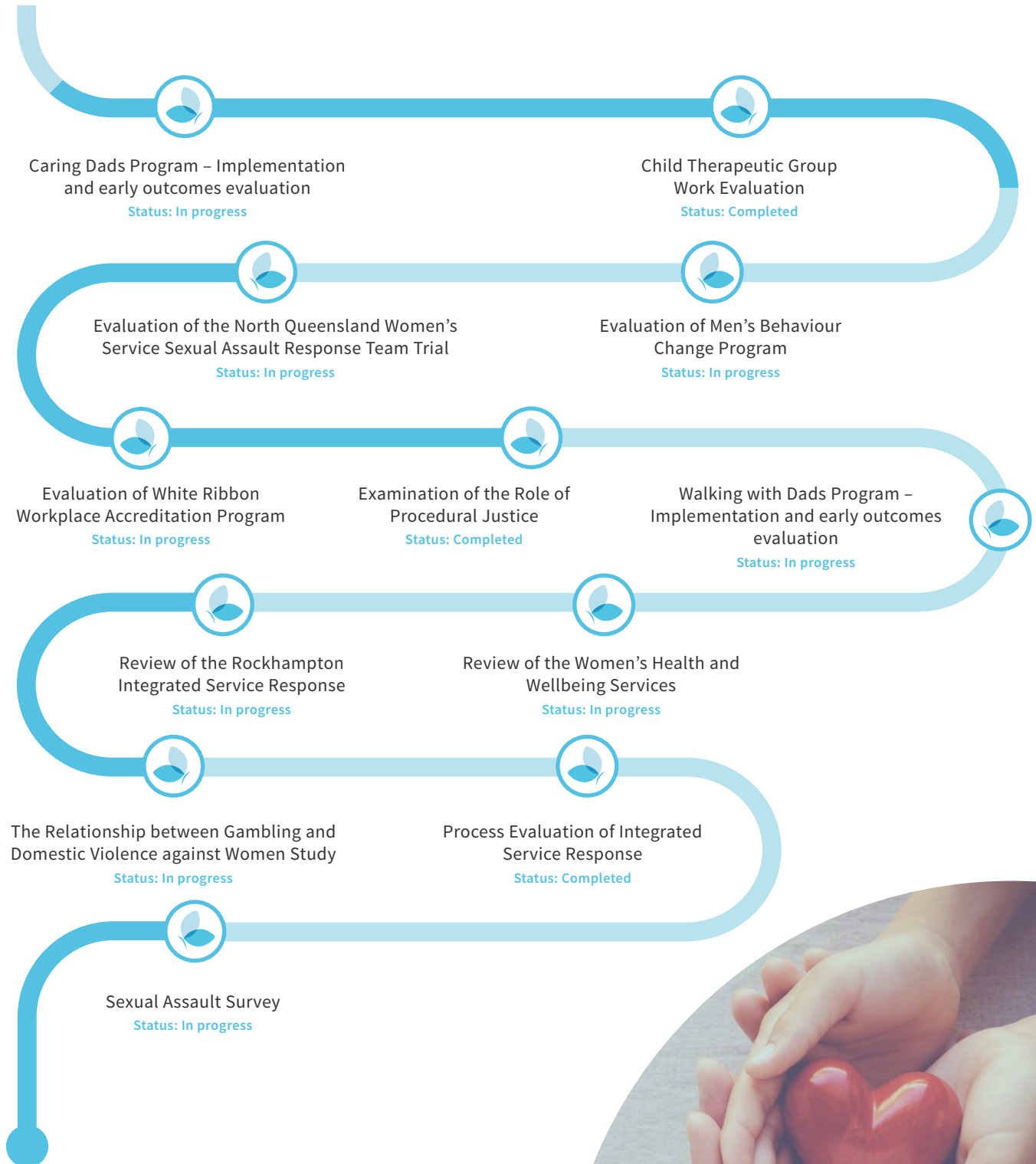


Flagship role established. CQUniversity created a Professorial role to focus on Gendered Violence Research in early 2018. Dr Annabel Taylor was appointed to the position, and with the QCDFVR team, continued her work in a number of local, state and national research endeavours.

Dr Annabel Taylor

2018 Projects

In 2018 we undertook a large range of projects – regional, state-wide and national. This included 12 projects, in addition to a range of literature reviews and practice papers.





Emerging Research

Sexual assault response team trial

The Centre is evaluating the participation of the North Queensland Combined Women's Service in a 24/7 Sexual Assault Response Team model to inform best practice responses to victims of sexual assault.

It explores the implications of the trial for Townsville, and for broader responses to sexual violence in Queensland.

The study combines quantitative and qualitative data collection methods and has a participatory action based approach. The initial evaluation report, delivered in August, outlines findings from the first 12 months of operations. A final summative/outcome evaluation report on the service model and its operation, due in 2019, will inform future program development, investment planning and models for responding to sexual assault.

Sexual assault survey

CQUniversity, with Centre support, is leading the way in seeking to understand more about the experiences of its student cohort with regard to sexual violence.

CQUniversity's student survey enquired about sexual harassment and/or assault and was open to enrolled students nationally, with data to be analysed in 2019. The study used a quantitative research design and was conducted via an internet based anonymous survey. Notably, this study included both vocational and higher education students, exploring the relationship between the victim and offender; where sexual violence occurred, and whether the violence was reported to the police. It was inclusive of sexual violence that occurred within intimate partner relationships.

CQUniversity's proactive recognition of the higher risk of sexual violence associated with university student populations will enable it to better understand and respond to its students. In addition to contributing to literature, it is intended that the findings from this study will contribute to CQUniversity's sexual harassment and sexual assault prevention and response efforts.

2017's national survey of university students, undertaken by the Australian Human Rights Commission, involved 39 universities and found that nearly seven percent of students reported having experienced sexual assault.



Responding to child trauma due to domestic and family violence

A feasibility study of a children's group therapy program at a regional domestic violence service was undertaken.

The approach was developed via a co-design process involving child therapists and the research team. It included an education program for carers, followed by a children's group therapy program.

A literature review undertaken simultaneously aided in the determination of methodology. This identified a paucity of evaluation programs to support the recovery of children impacted by domestic and family violence in Australia.

A set of measures to assess changes in parenting, attachment and various child behaviours was employed in the evaluation. These measures were based on previous studies, but with an additional focus on the few international studies that have taken into account the impact of coercion and control on children's trauma-related symptoms.

Findings:

- Quantitative results found that there was a significant reduction in children's post-traumatic symptoms.
- Qualitative results highlighted the value the carers placed in completing a parenting program.
- There was a reduction in children's attentional difficulties and ADHD symptoms.

Strengths of the program were the peer support it generated, increased empowerment of the carers – as individuals and parents – and the access to parenting information and skills.

Program constraints included the small number of children who completed the program within the scope of the evaluation timeframe. The study highlights the need for further research with a larger sample, and preferably longitudinal, in order to better understand the contribution of therapeutic services on children's recovery from domestic and family violence. Academic publication of the research is forthcoming.



Sector support

The Centre's capacity and capability building role has extended in recent years to include health and mainstream services, while maintaining its original focus on specialist community-based services.

Our website and a range of other media- including factsheets- enable the Centre to support services across regions and service types.



INDUSTRY ENGAGEMENT

Centre staff in all locations contributed to their communities in diverse ways. Membership of, and practical support to, key networks are examples of this engagement.

Work with industry bodies extended to staff involvement in the Queensland Domestic and Family Violence Death Review Board and the Queensland Premier's Domestic and Family Violence Implementation Council.

Through our relationships with, and across, sectors the Centre's unique focus on enhancing practice is ensured and sustained.



TOOLS AND RESOURCES

A range of resources to support practitioners and trainers in responding to domestic and family violence, and sexual assault, were developed. These included:

- **Sexual Assault** - Myths and Facts Cards to assist with challenging misconceptions about sexual violence
- **Domestic Violence Order Processes** – a suite of five fact sheets to inform the various parties involved in these processes
- **Violence against Women** – Myths and Facts - a fact sheet based on the 2017 National Community Attitudes Survey findings towards Violence against Women

These resources are all freely available via our website – an information hub for services and agencies. Through The Re@der, and social media, we continued to share practice and research wisdom for and with those working on the frontline.

Our digital engagement extends across social media and in the latter part of 2018, we began consultation with partners and industry experts to review and reinvigorate our website and digital reach. Stay tuned in 2019!



A VIRTUAL COMMUNITY OF PRACTICE

The Centre facilitated a digital community of practice which convened at intervals across the year. Through this approach domestic violence specialists in the Family and Child Connect and Intensive Family Support Services were connected with their peers, and contemporary practice experts.

Discussions supported workers to build their skill, understanding and capacity to respond to families experiencing violence. Topics included the intersection between domestic violence and child protection; exploring the phenomenon of coercive control; and cultural considerations for working with Aboriginal and Torres Strait Islander families.



*International Fulbright Scholar,
Mark Wynn*

WEBINARS

Researchers and practice experts shared their knowledge through face-to-face and digital engagement covering topics such as gender and coercive control; responding to sexual assault; and cultural considerations for working with Aboriginal and Torres Strait Islander people within the context of domestic and family violence.

Most recently International Fulbright Scholar Mark Wynn presented a webinar on Sexual Assault that was attended by hundreds of people from across Australia.



DIGITAL ENGAGEMENT



122,699
Website visits



23,665
E-newsletter reads



66,324
Resource downloads



139,518
Facebook reach



119,500
Tweet impressions





Indigenous partnerships

It is always a privilege working in partnership with Aboriginal and Torres Strait Islander and mainstream services to support their responses to the needs of those impacted by domestic and family violence.



Our work was enriched by the wisdom of our Aboriginal and Torres Strait Islander colleagues who helped us with a range of activities including:

- The customisation and delivery of Recognise, Respond, Refer training for primary health care staff in Aboriginal and Torres Strait Islander Community Health and Medical Centres in the South East corner, and

- Development of a practice paper, supporting service and other responses to Aboriginal and Torres Strait Islander people who have experienced sexual violence.

This collaboration is crucial in developing the knowledge and skills of frontline practitioners to improve engagement with, and enhanced outcomes for, Aboriginal and Torres Strait Islander clients affected by domestic and family violence.

Building understanding of trauma in practice



As our understanding of the relationship between violence and trauma grows, it was timely to hear from Samantha Wild. Samantha, an experienced practitioner with expertise in trauma and working with Indigenous communities, delivered both a webinar for a broader audience and facilitated a presentation to the Centre's Community of Practice (see p7).

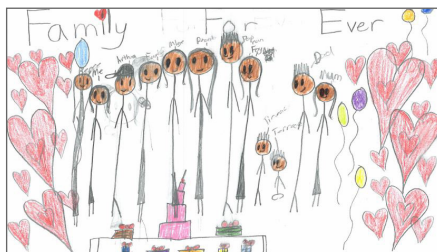
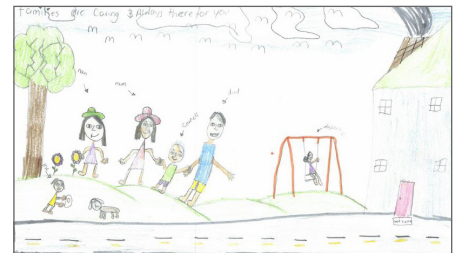
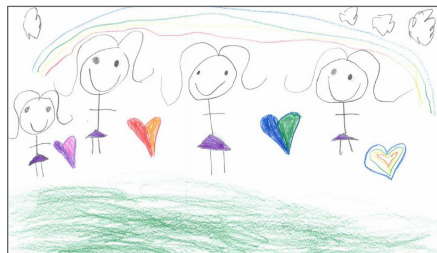
Her presentations explored the cultural considerations which impact on violence prevention in Aboriginal and Torres Strait Islander communities. The areas of trauma informed practice and the emerging research in cultural response frameworks also formed part of these sector development activities.



Woorabinda Happy Families

The year ended on a celebratory note as the 'Happy Families' project with the Queensland Police Service came to fruition. This community initiative with the Woorabinda State School reflected and promoted happy families from a child's perspective. Dozens of children drew pictures of what their happy family looked like, which were then developed into a calendar.

These calendars were presented to the children, their families and community in Woorabinda in a moving presentation in December. Our wonderful Jamie Anderson attended the presentation (in her 2018 Queensland Indigenous Family Violence Prevention Forum t-shirt), joining Sergeant Dan Meehan and Tracy Egan, the principal of Woorabinda State School.

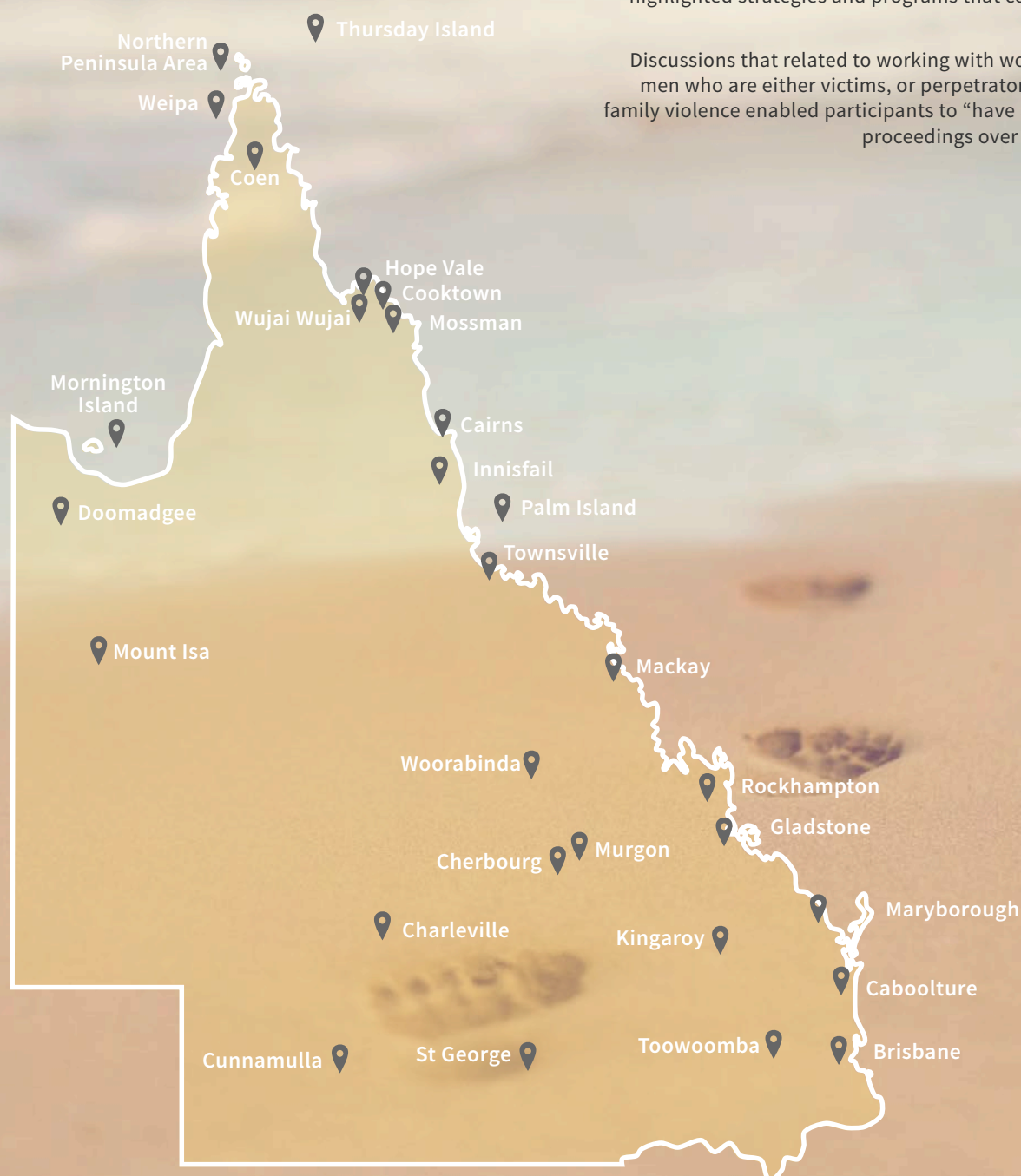


Queensland Indigenous Family Violence Prevention Forum

The Queensland Indigenous Family Violence Prevention Forum was held in Townsville. One hundred and thirty five delegates came together from all over Queensland to learn and share to enhance their practice.

The program featured Northern Territory champion Charlie King and speakers from Our Watch and SNAICC. These inspirational presenters highlighted strategies and programs that could be adopted by attendees.

Discussions that related to working with women, children and men who are either victims, or perpetrators, of domestic and family violence enabled participants to “have a voice” during the proceedings over the two day event.





A sample of delegates at the Queensland Indigenous Family Violence Prevention Forum 2018

““““

Enjoyed keynote speakers

““““

The session was deadly!

““““

I found that all sessions were mind opening

““““

The best things about the Forum were...

Healing our way

The honesty and openness of the presenters. Solutions

The passion and dedication of the presenters

Connecting, learning and being inspired

Very good and loved hearing from the presenters.
One word – excellent



Customised
training

Higher
education

Vocational
educational and
training (VET)

Education and training

Through CQUniversity, the Centre offered a range of units and courses covering multiple aspects of domestic and family violence practice.

The Centre continued its leadership in the development and delivery of learning opportunities in this area. Study options are available across a range of levels including professional development workshops; Vocational Education and Training; Undergraduate and Postgraduate study.

No two student journeys are the same. Some may commence with a non-accredited training experience, and decide to enroll in accredited education- through either completing a vocational education unit (which can become part of a recognised qualification), or through enrolment in a single unit of higher education (which can lead to a Postgraduate degree).

We are proud of our team of in-house and contracted teaching and tuition staff who bring both practice and educational expertise to CQUniversity.

Customised Training

In addition to our suite of accredited training and higher education options - available through our location within the dual sector CQUniversity - the Centre also offered a range of customised training for organisations and workplaces. This training was tailored to the specific needs of each organisation/ groups of organisations and included workshops on approaches to safety planning and use of the Common Risk and Safety Framework.



> COMMON RISK ASSESSMENT AND SAFETY FRAMEWORK TRAINING

In 2018 our trainers delivered customised workshops to Domestic Violence High Risk Teams, Integrated Service Response personnel and key stakeholders in identified Queensland sites.

This training was an integral aspect in building greater integrated service responses to domestic and family violence in this state.

Our trainers travelled to locations between Cairns and the South East Corner, and west to Mount Isa and provided opportunities for people to come together to learn more about domestic and family violence and gain practical experience in using the Framework's tools.

500 front line workers were trained in domestic violence risk assessment in 2018.

The discussion was engaging, well facilitated and stretching

> EXTENDING EDUCATION TO HEALTH

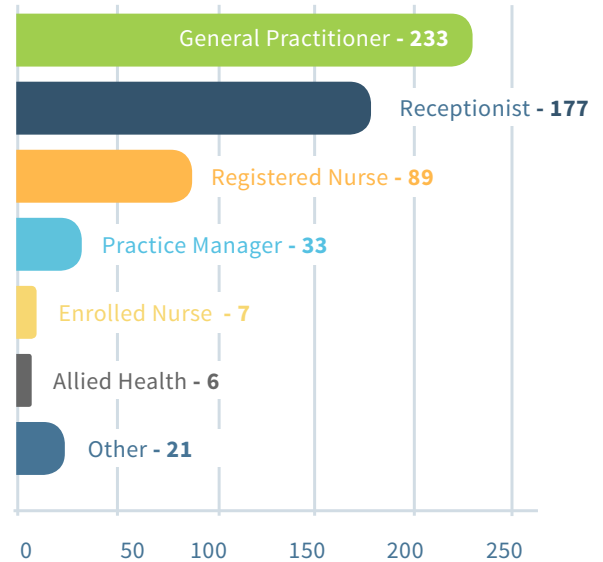
The Centre trained staff from over 60 General Practices and Aboriginal Medical Services through its work with Brisbane South Primary Health Network.

Developed by the Centre in collaboration with medical educators, the Recognise, Respond, Refer training is equipping general practice staff with skills to identify signs of abuse, sensitively make enquiries, effectively respond and refer when required.

Really informative and affirming in feeling more capable in responding to presented cases

Brilliant. Utterly relevant to my practice and refreshingly practical

Health professionals trained in 2018. Recognise, Respond, Refer program by profession:



The Domestic and Family Violence Death Review and Advisory Board identifies the important role that Primary Health Networks have in undertaking workforce development initiatives to respond to domestic and family violence in its 2017/2018 Annual Report.

Vocational education and training

CQUniversity offered three accredited vocational units through the Centre:

- Recognise and Respond Appropriately to Domestic and Family Violence
- Provide Support to Children affected by Domestic and Family Violence
- Provide Domestic and Family Violence Support in Aboriginal and Torres Strait Islander Communities

“”

*So good!!
Everyone should
do this.*

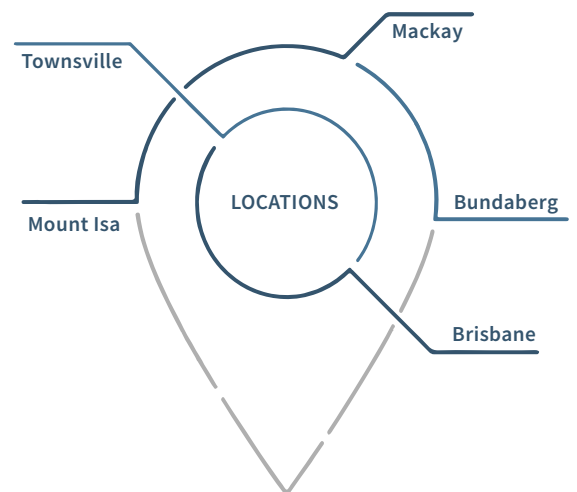
> ACCREDITED TRAINING FOR FRONTLINE WORKERS

We continued our partnership with Churches of Christ Care Queensland to extend the knowledge and skills of their staff from diverse areas across Queensland.

Staff completed units from our accredited vocational training options, and customised workshops on risk assessment developed by the Centre. For participants, these critical training opportunities have significantly improved their knowledge and practice in supporting families.

“”

It was great to have practitioners who have worked in the field with real world experience and understanding deliver this.



Mr Rod Francisco,
Manager People
and Culture, Mackay
Regional Council

> HELPING LOCAL GOVERNMENT RECOGNISE AND RESPOND TO DOMESTIC AND FAMILY VIOLENCE

2018 saw accredited training delivered to a group not traditionally seen as part of the domestic violence sector: staff from local government.

This partnership with Mackay Regional Council highlights the increasing recognition of the role all agencies can play in preventing and responding to domestic and family violence.

“”

This course was pivotal in connecting our staff with the community strategy... We want everyone to help spread the message of zero tolerance and recognise that any aspect of violence, real or potential in the workforce will not be tolerated.





Higher education

CQUniversity has, since 2015, initiated and developed its range of higher education study options, delivered by research-active teaching staff who are part of the Centre team.

In 2019 the range will grow through the addition of a new Postgraduate unit, Sexual Violence in Domestic and Family Violence Contexts, and an Undergraduate unit, Violence Against Women: Key Themes.

Postgraduate Courses:

- Graduate Certificate in Domestic and Family Violence Practice
- Graduate Certificate in Facilitating Men's Behaviour Change
- Graduate Diploma of Domestic and Family Violence Practice
- Master of Domestic and Family Violence Practice

> SCHOLARSHIPS BUILD WORKFORCE CAPACITY

Thanks to the contribution of the Queensland Government, CQUniversity implemented a scholarships program to workers in the domestic violence sector to enable Postgraduate study in Domestic and Family Practice. Staff at the Centre played a pivotal role in establishing and supporting this program, which had 19 recipients. This will contribute to an increase in knowledge across the sector, and benefit a broad range of services and organisations who responding to domestic and family violence.

“””

I found the content of each unit easy to comprehend... Studying the theories and how they shape and make sense of why we work the way we do. Not only does it make sense but it allows for greater understanding and approaches to support clients. I recommend if you have a passion for working with men in Facilitating Men's Behaviour Change, to do the Graduate Certificate. - A Queensland Government Scholarship recipient



The work of the Queensland Centre for Domestic and Family Violence Research would not be possible without the ongoing support of its partners

 The Queensland Government, Department of
Child Safety, Youth and Women

 CQUniversity Australia