

# Practice principles for a domestic violence informed child protection practice approach



Child protection practice

Domestic violence responses




**Practice at its most challenged**

Working party formed to support the delivery of integrated child protection and domestic violence responses for families

- safety and well being of children
- safety and empowerment of women
- responsibility and accountability of perpetrators



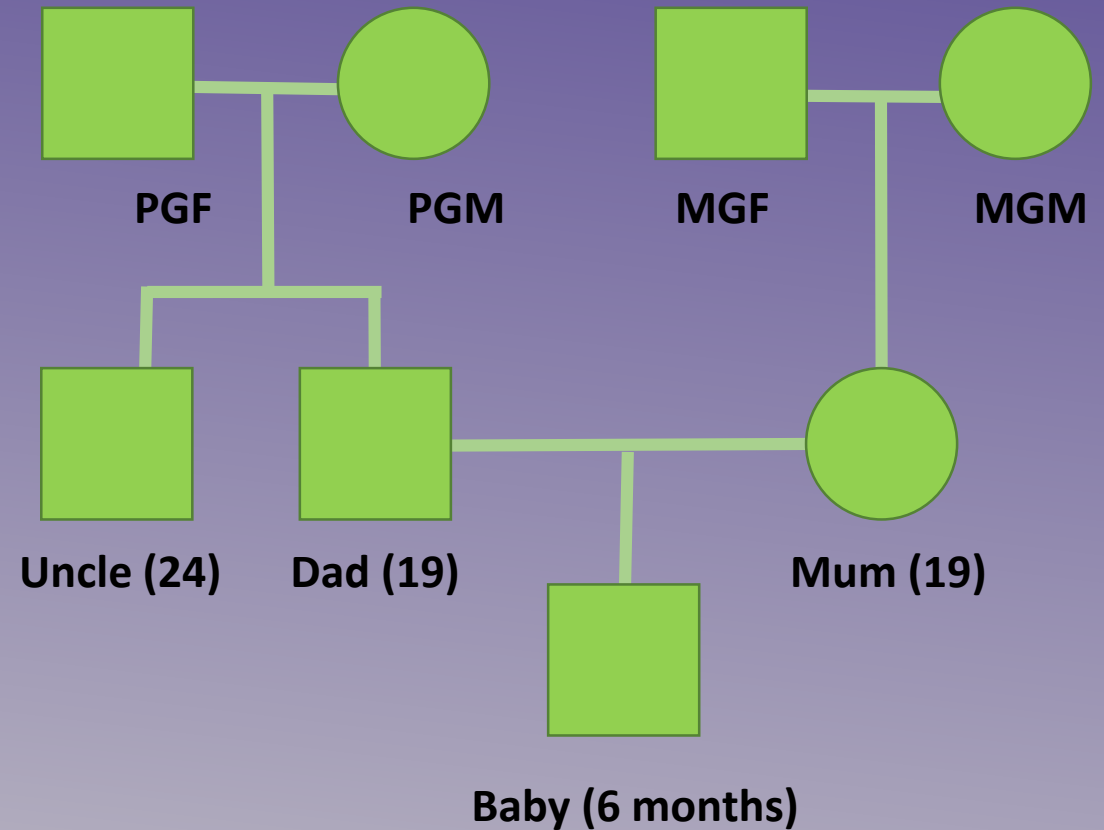


# **CASE STUDY**

# Presenting issues

- Referral from Child Safety to Intensive Family Support identified mutual violence and anger issues
- Exposure of baby to violence
- Mum - post natal depression
- Dad - history of substance use
- Limited parenting skills

## *Genogram*





**Key Learnings & Reflections**



**Best  
Practice...**

**Documentation**  
**Unseen impacts**  
**Risk assessment Intervention**  
**Survivor Safety Planning Children**  
**Acts of Protection Collaboration**  
**Language Integrated responses**  
**Evidence Based**  
**Culturally Responsive**  
**Trauma Informed**  
**Partnership Perpetrator Patterns Parenting**  
**Competent workforce Victims**  
**Safety Shared frameworks**  
**Safety networks**  
**Accountability**

# **Practice principles for a domestic violence informed child protection practice approach**

**Include:**

- intervention with children**
- partnership with adult victim**
- intervention with perpetrator**
- the perpetrator's pattern of behaviour and the link to child harm**
- high standards for men as parents**
- the intersection with other issues (mental health, substance use, etc.)**
- culturally responsive and trauma informed**