

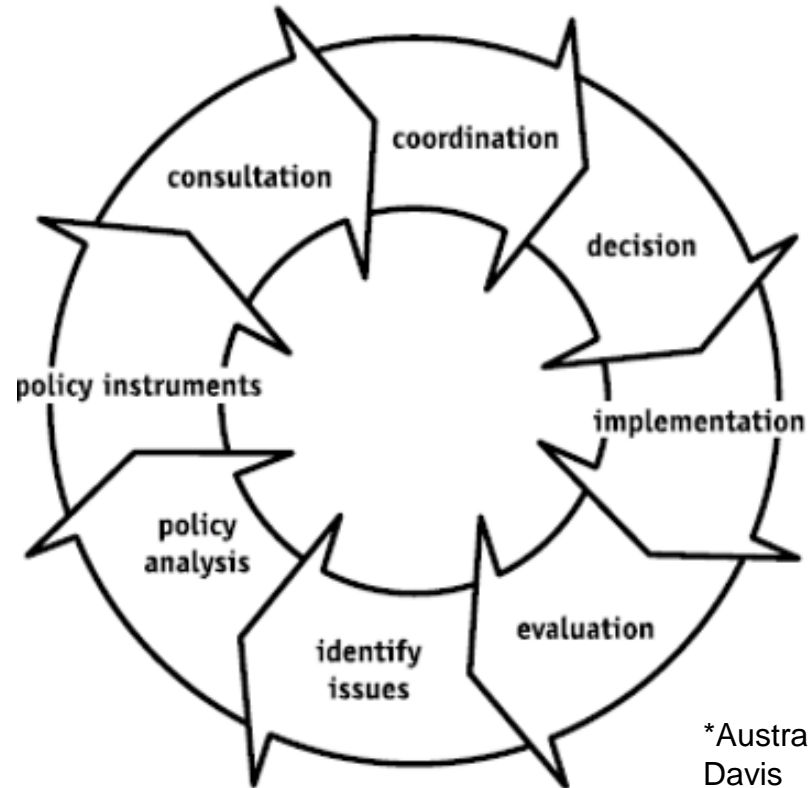


Not Now, Not Ever Research Symposium

*Current and future policy directions:
implications for research*

**Barbara Shaw, Executive Director
Office for Women and Domestic Violence Reform
Department of Communities, Child Safety and
Disability Services (DCCSDS)**

Policy Development Cycle



*Australian Policy Cycle – Bridgman & Davis



Policy landscape

Not Now, Not Ever Report
(and Qld Government response)

Domestic and Family Violence
Prevention Strategy 2016–26
(and supporting action plans)

Qld Violence
against
Women
Prevention
Plan 2016-22

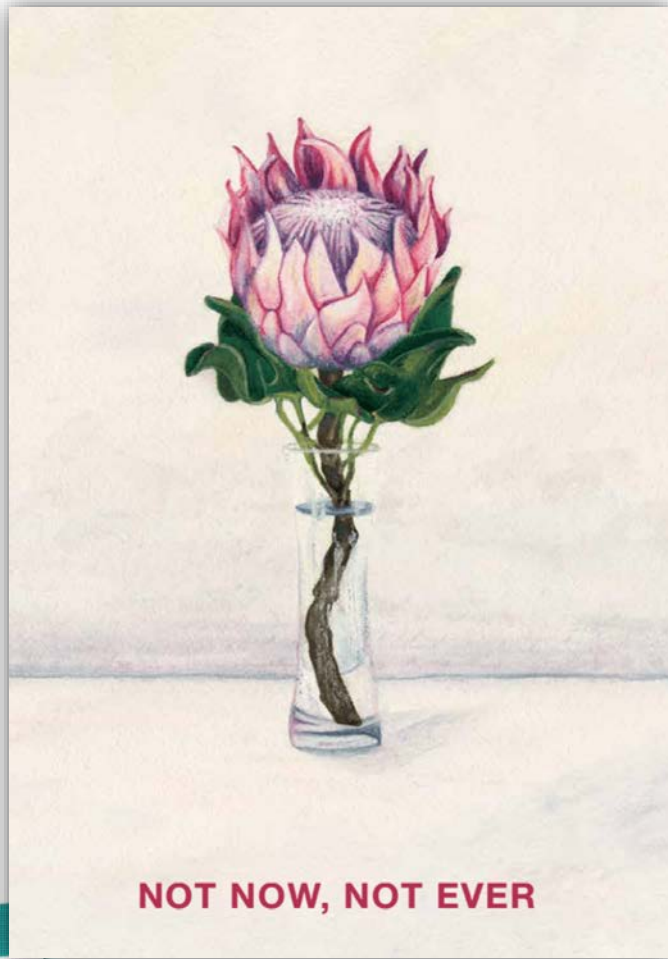
Supporting
Families
Changing
Futures

Queensland Women's Strategy 2016–21
(and supporting Community Implementation Plan)

National Plan to Reduce Violence Against Women
and their Children 2010–22
(and supporting action plans)



Not Now, Not Ever



“The time is right for action and I believe the community has the will to change”

Premier Palaszczuk 18 August 2015

- 121 Government recommendations
- 19 non-government recommendations

Domestic and Family Violence Prevention Strategy 2016–2026

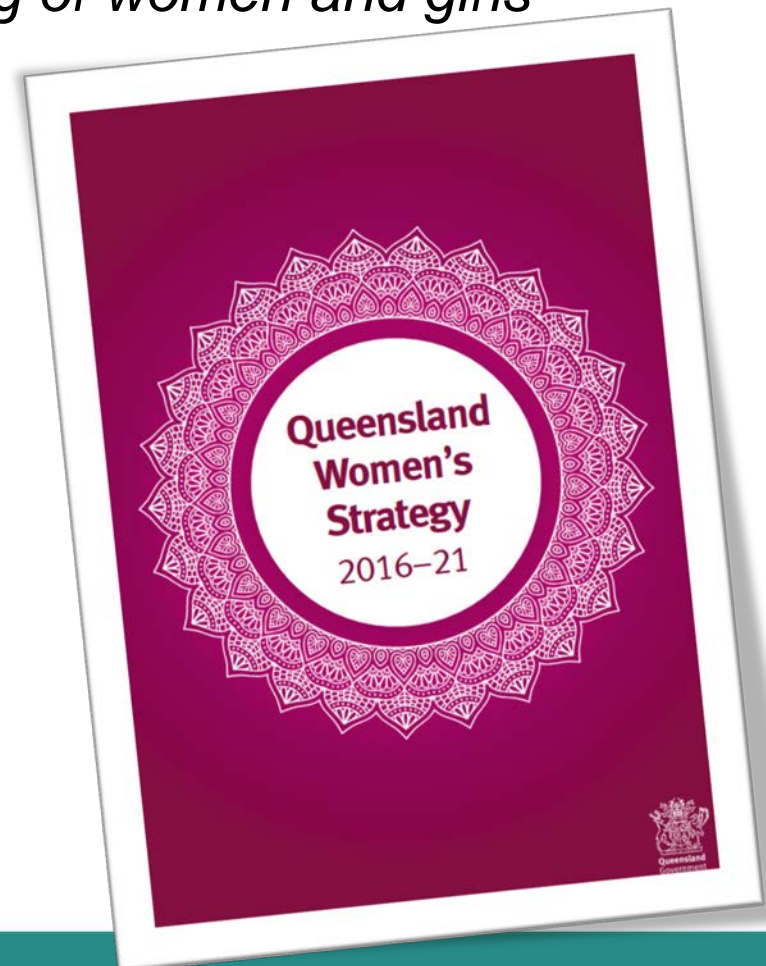
EVALUATE



Queensland Women's Strategy 2016-21

Respecting women, embracing gender equality and promoting the rights, interests and wellbeing of women and girls

- Participation and leadership
- Economic security
- Safety
- Health and wellbeing

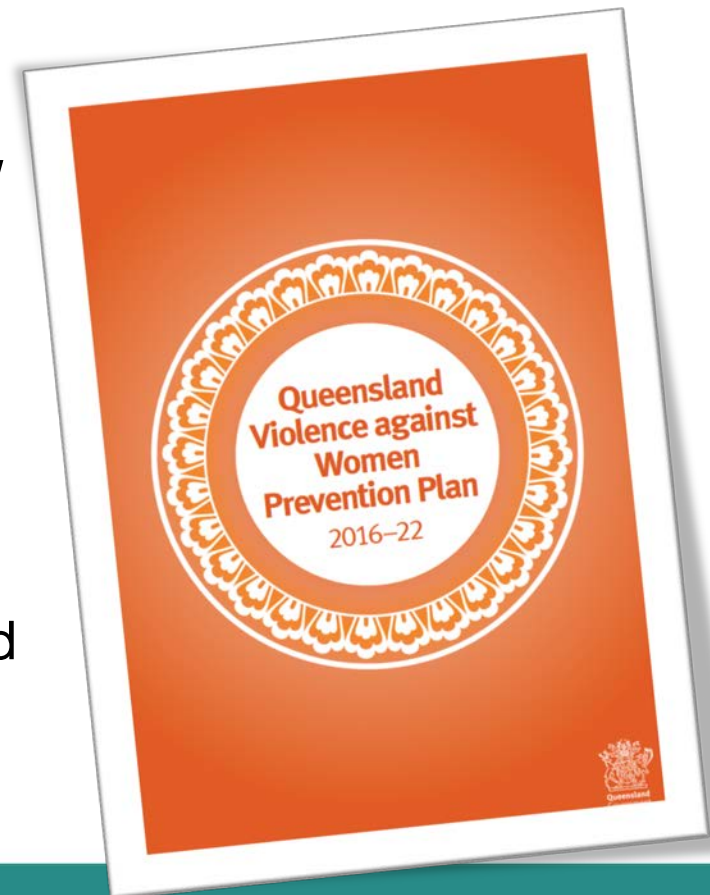


Violence against Women Prevention Plan 2016-22

Shifting community attitudes, decreasing risk and reducing impact of violence, responding effectively and preventing reoffending

Research elements:

- Building the evidence base about VAW
- Capacity and capability building
- *Change the Story*
- Indigenous primary prevention model
- DFV against women with disability
- Youth Sexual Violence and Abuse
- DFV Death Review and Advisory Board



Supporting Families, Changing Futures



- Released in April 2016
- \$425M over 5 years from 2014-25
- Strategic directions:
 1. **Sharing responsibility** for the safety and wellbeing of Queensland Children;
 2. Supporting Queensland Families **earlier**;
 3. **Working better** with Queensland families who are in contact with the child protection system
 4. Improving **out-of-home care and post-care** for Queensland children and young people
 5. Meeting the needs and requirements of Queensland's **Aboriginal and Torres Strait Islander** children, families and communities
 6. Delivering **quality services** to Queensland children and families through a capable, motivated workforce and client-focused organisations
 7. Building an **accountable, transparent and cost-effective** Queensland system

National Plan to Reduce Violence against Women and their Children 2016-22

- Third Action Plan 2016-2019
- 36 actions in six priority areas

Prevention and
early
intervention

Aboriginal and
Torres Strait
Islander women
and children

Greater support
and choice

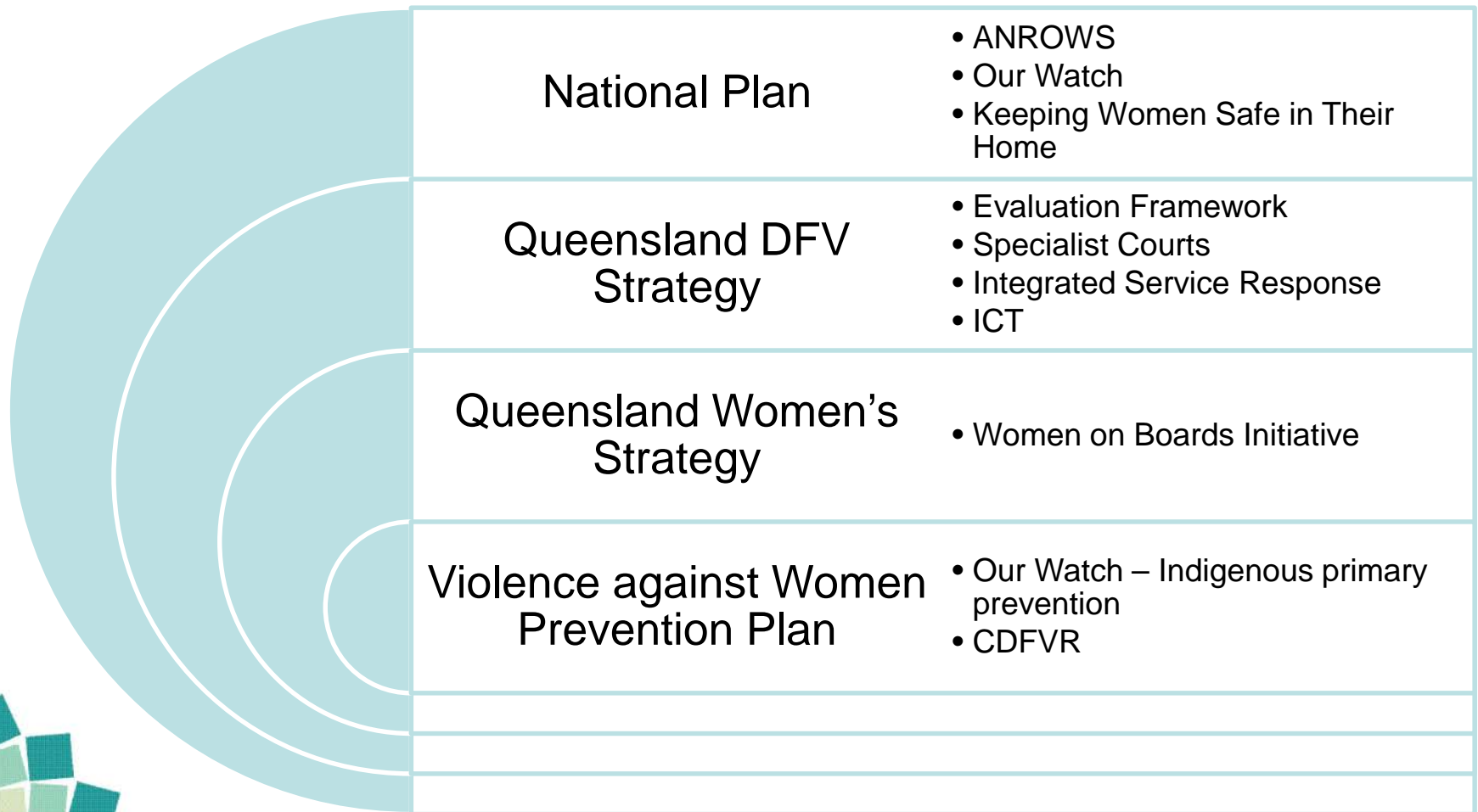
Sexual Violence

Children

Perpetrator
accountability



Research and evaluation investment: Building the evidence base to support reform



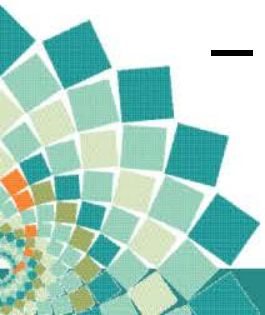
Research gaps

What don't
we know?



Responses to violence

- New and emerging forms of violence
 - technology-facilitated violence
 - female genital mutilation
 - forced / underage marriage
- Evaluation of new approaches
 - Non-fatal strangulation offence
 - Body worn cameras
 - DFV training



Perpetrators

Prevention
– attitudes
and
behaviours

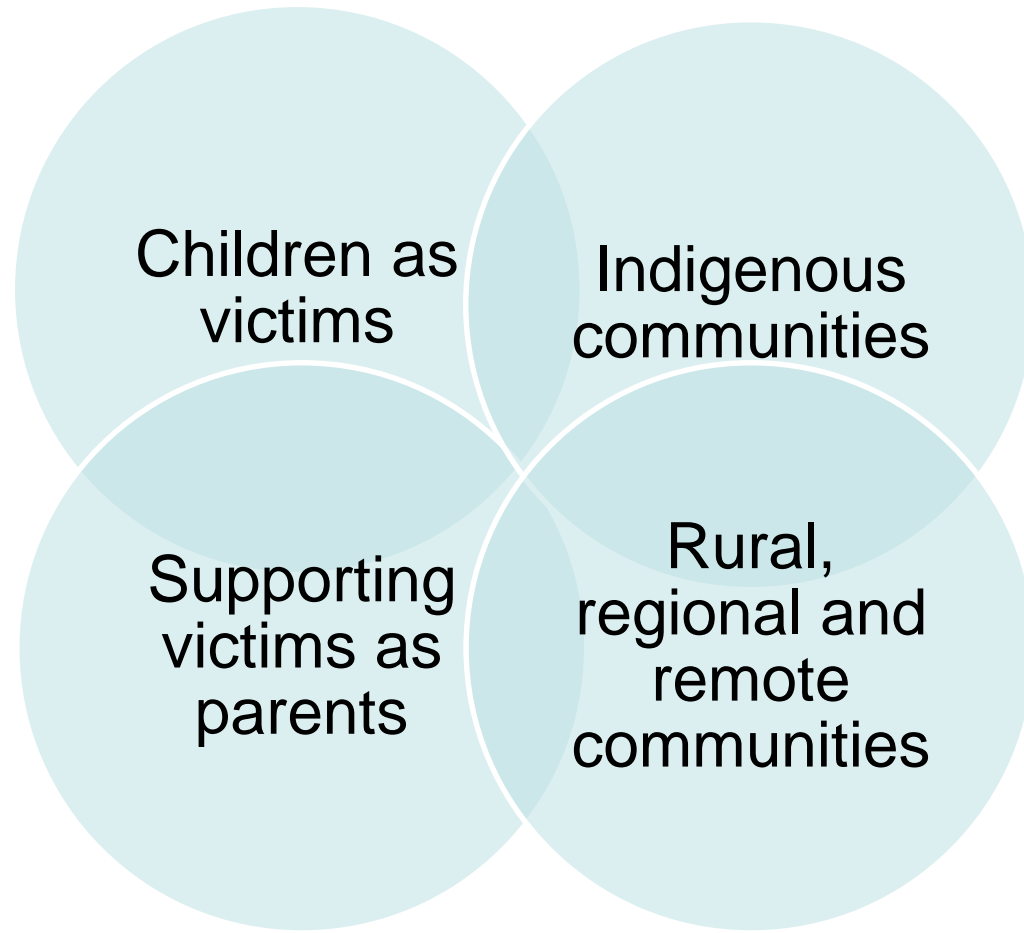
Effective
intervention

Defining
high risk
and
preventing
homicide

Long term
behaviour
change



Meeting the needs of women and their children



Intersectionality

- “When we don’t pay attention to the margins, when we don’t acknowledge the intersection, where the places of power overlap, we not only fail to see the women who fall between our movements, sometimes we pit our movements against each other.”

Professor Kimberlé Crenshaw



The way forward

- Collaboration between governments, sector and the community
- Opportunities to harness momentum



Thank you

